

# NAEC Annual Meeting

December 6, 2021



# Agenda

1. Welcome and President's Update – Sue Herman, MD
  - a) NAEC Operations Update
  - b) 2021 Activities and Accomplishments
  - c) 2022 Activities
2. NAEC Data Analysis and Publications – Adam Ostendorf, MD, and Stephanie Ahrens, DO
3. NAEC Guideline Update – Fred Lado, MD, PhD and Susan Arnold, MD



# President's Update

Susan Herman, MD

NAEC President



# Outgoing Board Member



Kevin Chapman  
Phoenix Children's Hospital  
NAEC Board Member at Large



# NAEC Board for 2022

President	<b>Susan Herman, MD</b> Barrow Neurological Institute
Vice President	<b>Fred Lado, MD, PhD</b> Hofstra Northwell Comprehensive Epilepsy Center
Secretary/ Treasurer	<b>Stephan Schuele, MD, MPH</b> Northwestern Medicine Comprehensive Epilepsy Center
At-large	<b>Ahmed Abdelmoity, MD</b> Children's Mercy Epilepsy Center
At-large	<b>David Clarke, MD</b> Dell Children's Medical Center
At-large	<b>Kathryn Davis, MD</b> University of Pennsylvania
At-large	<b>Jennifer Hopp, MD</b> University of Maryland
Past President	<b>Nathan Fountain, MD</b> F.E. Dreifuss Comprehensive Epilepsy Program



# NAEC Epilepsy Center Accreditation

## Center Demographics (2021)

	Adult	Adult/Pediatric	Pediatric	Total
Level 4	74	79	46	199
Level 3	41	17	4	62
Total	115	96	50	261

## NAEC Accredited Centers by Year

	2021	2020	2019	2018	2017	2016
Level 4	199	199	192	188	181	184
Level 3	62	57	54	52	52	41
Total	261	256	246	240	233	225



# 2022 Accreditation Timeline

- **November 22, 2021:** NAEC 2022 accreditation process began; Instructions distributed.
- **January 31, 2022:** Deadline to pay dues, complete the Center Annual Report, upload required documents to Box.com, and complete the supplemental survey.
- **February 1-15, 2022:** Review and Revise Period: NAEC staff will review your center's submission for completion and let you know if anything is missing.
- **March 1, 2022:** Final deadline for any revisions or additions. **We cannot accept dues or materials after this date.**



# 2022 Accreditation Webinar

- NAEC will hold a webinar on the 2022 accreditation process, criteria and timeline in January.
- Please share with your administrators/staff who help with process!





# Accreditation Changes for 2022: COVID-19 Flexibilities End

- NAEC will remove the COVID-19 flexibilities from 2021 (relaxed criteria related to EMU admissions, surgical procedures, and key personnel) and reinstitute prior criteria
- NAEC recognizes that in certain areas, the COVID-19 pandemic still impedes center activities, while most centers reported they returned to more normal operations.
- **Accordingly, the Accreditation Committee will independently and anonymously review all centers with deficiencies on case-by-case basis**



# New Criteria Taking Effect in 2022

- **An EMU that meets certain criteria**
- **Medical Director who is board-certified in epilepsy or clinical neurophysiology (or equivalent); the 2nd epileptologist may be board-eligible rather than board-certified;**
- **Pediatric and adult/ped centers must:**
  - have a **pediatric epilepsy specialist** (board-certified in child neurology as well as epilepsy and/or clinical neurophysiology) and
  - provide a **video EEG report for a patient 2 years old or younger.**
- *Note: These criteria are implemented on a **prospective basis**: centers will attest that they meet them as of when they submit their Center Annual Report and moving forward. (This is not a retrospective attestation for 2021.)*



# New EMU Criteria

1. Designated hospital beds where video and EEG data is captured and sent to a central location
2. Remote-control video cameras with 24/7 recording available (not a fixed camera)
3. Trained personnel dedicated 24/7 to monitoring video and EEG – someone trained in seizure recognition and recording integrity, not necessarily a traditional EEG technologist
4. EMU safety-trained inpatient nurses
5. Epilepsy-specific staff training and protocols for seizure safety
6. Clinical decision-making by an epileptologist

*Note: More details are in accreditation instructions*



# Supplemental Survey

- By the end of 2021, NAEC will distribute a supplemental survey, like the surveys NAEC members completed in 2020.
- All centers will be required to complete the supplemental survey to maintain their accreditation for 2022.



# Expanding NAEC's Accreditation Committee

- 2019-2021 Members
  - Dr. Susan Arnold, Chair
    - Children's Medical Center, Dallas
  - Dr. Christi Heck – USC
  - Dr. Evan Sandok – Marshfield Clinic
- Members as of 2022
  - Dr. Meriem Bensalem-Owen, Chair – University of Kentucky
  - Dr. Christi Heck – USC
  - Dr. Ammar Kheder – Children's Healthcare of Atlanta
  - Dr. Megan Selvitelli – Maine Medical Center
  - Dr. John Stern – UCLA



# 2021 Activities and Accomplishments

**Standard  
Setting**

**Advocacy**

**Member  
Center  
Support**

**Assuring quality epilepsy care by  
supporting strong specialized epilepsy centers**



# 2021 Activities: Standard Setting

- Completed the 2021 Accreditation Process
- Significant discussion re: 2021 accreditation process and necessary changes due to COVID-19
- Epilepsy Learning Health System Support
- Started process to revise NAEC Guidelines



# 2021 Activities: Standard Setting & Center Resources

- March 2021 launch of Training Program for Neurodiagnostic Assistants (VEEG observers/monitor watchers) with ASET
  - No cost for NAEC member center personnel
  - NAEC/ASET sees this as the starting point for educating future EEG technologists.





# Bridging the Gap

Growing a Qualified Workforce (phased-in approach)

The LTM 100 beginner course is part of a broader 13-course EEG curriculum (EEG 200-212). It was developed as an introduction to long-term EEG monitoring, to build fundamentals skills and to further develop a talent pipeline and career ladder.

- ASET offers profession-specific
  - Education
  - Roles/Job Descriptions
  - Competency Measures
- ABRET offers professional credentials
  - R. EEG T. & CLTM
- Colleges offer credit for Neurodiagnostic credentials
- NAEC supports improving patient safety measures in the EMU and credentialed Neurodiagnostic Technologists.



Neurodiagnostic Assistants are encouraged to continue learning, prepare for exams, earn the R. EEG T. credential and advance professionally in their career.



**You have the skills and the tools, now take the next step!**

ND Assistant

ND Technologist I

ND Technologist II

ND Specialist I

ND Specialist II

ND Analyst

ASET is continually improving the 13-course EEG curriculum (EEG 200-212) and 10-course LTM curriculum (LTM 100-209) with the intention that individuals will continue their learning and exam preparation to advance professionally in their career.

Creating a talent pipeline and career ladder is critical to growing and sustaining a qualified workforce with benefits that include: increased awareness about the profession, improved patient safety and staffing ratios, increased staff development opportunities and specified roles within the Neurodiagnostic service line.

## Promoting Patient Safety and Professional Competence

We encourage you to familiarize yourself with these [position statements](#) to better understand ASET's continuing efforts to support ND Technologists and the future of the profession as a whole:

**Definition of Qualified Neurodiagnostic Technologist  
Minimum Education and Credentialing  
Core Curriculum as a Means to Grow a Qualified Workforce  
College Credit for Credentials  
Professional Licensure**

[aset.org](http://aset.org)



# 2021 Activities: Standard Setting & Center Resources

- December 2021 launch of Epilepsy Nurse Education Curriculum development with AANN for outpatient and EMU care.
  - Visit Posters #370 and #371 at the conference to learn more about the market research and development of the certificate program.
- Developed in collaboration with ASET and NAEC.





## Certificate Program for the SEIZURE AND EPILEPSY Healthcare Professional

An assessment-based certificate program.

**Developed by the American Association of Neuroscience Nurses (AANN) and the American Board of Neuroscience Nursing (ABNN).**

- The final 2 modules of the 8-module program were developed in conjunction with **NAEC and ASET.**

**Purpose:** To provide foundational knowledge to provide evidence-based care to patients who have seizures and epilepsy, who are admitted to an Epilepsy Monitoring Unit and who are being evaluated for and/or undergoing surgery for medically refractory epilepsy.

### **Program Description:**

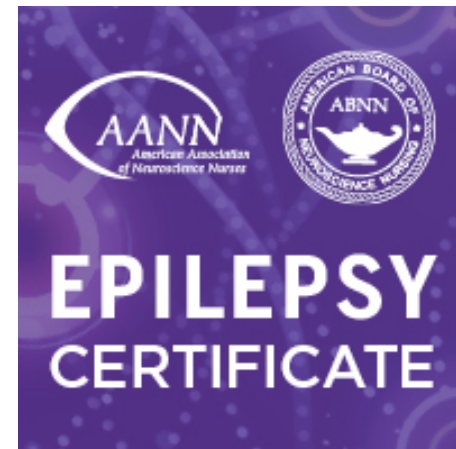
- Open to all healthcare professional. No eligibility requirements.
- Online, self-paced learning modules with handouts
- One final post-assessment
- CE contact hours awarded to those who complete the course
- ABNN Certificate of added qualification if learner passes the post-assessment
- Renewal required every 3 years

Visit [AANN.org/epilepsycertificate](http://AANN.org/epilepsycertificate) for more information.



## 6-Module Certificate Program:

- **For professionals who:**
  - Work with seizure/epilepsy patients, but are not in an NAEC accredited center
  - Do not work with seizure/epilepsy patients, but are interested in furthering their knowledge on the topic
- **Price:**
  - AANN Members \$250
  - Non-Members \$400



---

## 8-Module Certificate Program: *(will fulfill the NAEC accreditation requirement for nursing education)*

- **For professionals who:**
  - Work in an NAEC accredited center
  - Do not work in an NAEC accredited center, but are considering moving to one OR their hospital is in pursuit of NAEC accreditation
- **Price:**
  - AANN Members \$300
  - Non-Members \$450

Visit [AANN.org/epilepsycertificate](http://AANN.org/epilepsycertificate) for more information.





## Certificate Program for the **SEIZURE AND EPILEPSY** Healthcare Professional

An assessment-based certificate program.

### Core 6 Modules:

- **Module I** – Anatomy, Physiology, and Etiology of Epilepsy
- **Module II** – Seizures
- **Module III** – Diagnosis and Assessment
- **Module IV** – Treatment
- **Module V** – Education and Self-Management
- **Module VI** – Special Populations with Epilepsy

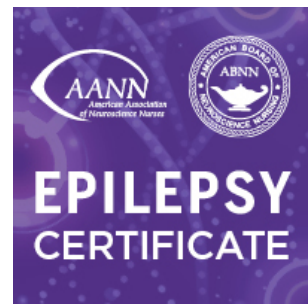
### Additional 2 Modules:

- **Module VII** – Nursing Care in the Epilepsy Specialty Clinic
- **Module VIII** – Nursing Care in the (EMU)

Visit [AANN.org/epilepsycertificate](http://AANN.org/epilepsycertificate) for more information.



# Thank You to All Editors, Contributors, Reviewers, and Item Writers



**Editor:** Mona Stecker

**Mentee Editor:** Tracy  
Broomhead

**AANN Board Liaison:**  
Madona Plueger

**AANN Contributors:**

- Erin Fecske
- Erica Yates
- Eugena Bergvall
- Laura Buck
- Mark Stecker
- Wynne Bird

**NAEC Contributors:**

- Stephanie Chen
- Connie Burten
- Elizabeth Hoover  
Papendick
- Molly Maradik
- Michelle Schaeve
- Mary Mizera
- Natalya Kan
- Dr. Susan Herman  
(reviewer)
- Dr. Stephan Schuele  
(reviewer)

**ASET Contributors:**

- Maureen Carroll
- Khrystyna Moskalyk
- Susan Agostini
- Linda Kelly (reviewer)

**ABNN Item Writers:**

- Shivani Bhatnagar
- Angela Hawkins
- Heidi Maloni
- Gaetha Mills
- Malissa Mulkey



# 2021 Activities: Advocacy

- Worked with ACNS and AAN to provide coding info to CPT Assistant and Medicare contractors
- Analysis of Medicare rules
- Comments in response to Blue Cross/Blue Shield coverage policies on LITT and Ambulatory EEG
- Signed letters to Congress on prior authorization relief.





# 2021 Activities: Member Center Support

- Webinars:
  - Town Hall on Starting the Epilepsy Equity Conversation
  - NAEC Town Hall on Optimizing Care for Patients with Rare and Genetic Epilepsies – Working with the Rare Epilepsy Network (REN)
- Drafted and submitted articles for publication based on NAEC Center Annual Report and survey data
  - COVID data accepted as a late breaking abstract to AES as e-poster 1.427
- Responded to questions from members on coding, reimbursement, insurance coverage policies



# 2022 Activities

## Standard Setting

- Complete 2022 accreditation cycle
- Finalize new accreditation changes for 2023
- Undergo process to revise NAEC's Guidelines for epilepsy centers.
- Publications re: NAEC survey data

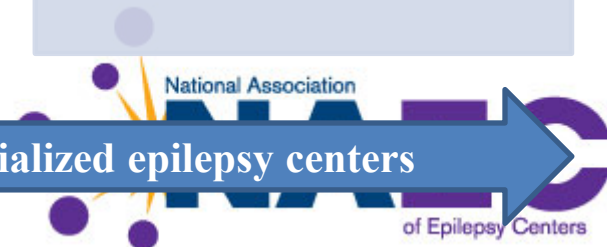
## Advocacy

- Explore coding options
- Advocacy with private insurers
- Analysis and advocacy re: Medicare Rules
- Collaborations with AAN, AES, ELC, and EF

## Member Center Support

- Town halls and webinars
- Answer center-specific questions
- Develop Center Toolkit and add resources to new Resources Page

Assuring quality epilepsy care by supporting strong specialized epilepsy centers



# Strategic Planning

- NAEC Board meeting this week to begin strategic planning process for 2022-2027
  - Reviewing/revising pillars and activities
  - Addressing health disparities
  - Responding to broader health care system changes
  - What's NAEC's role in and responsibility to broader epilepsy community – patients, sister organizations, research enterprise, etc?



# Thank You to 2021 NAEC Volunteers!

## **Accreditation Committee**

Susan Arnold, MD – Chair  
Christi Heck, MD  
Evan Sandok, MD

## **Finance Committee**

Dave Clarke, MD  
Jenny Hopp, MD  
Adriana Tanner, MD

## **Nominations Committee**

Dave Clarke, MD – Chair  
Jenny Hopp, MD  
Barbara Dworetzky, MD

## **Guidelines Oversight Committee**

Christi Heck, MD – Co-Chair  
David Labiner, MD – Co-Chair  
Stephan Schuele, MD  
Kevin Chapman, MD  
Lara Jehi, MD

## **Survey Work Group**

Stephanie Ahrens, DO  
Anto Bagic, MD  
Kevin Chapman, MD  
Nathan Fountain, MD  
Jay Gavvala, MD  
Adam Ostendorf, MD  
Kyle Rossi, MD

## **NAEC Coding Session and Webinar Speakers**

Stephanie Ahrens, DO  
Greg Barkley, MD  
Kevin Chapman, MD  
Dave Clarke, MD  
Nathan Fountain, MD  
Christi Heck, MD  
Sue Herman, MD  
Jenny Hopp, MD  
Fred Lado, MD, PhD  
Rusty Novotny, MD  
Marc Nuwer, MD  
Adam Ostendorf, MD  
Adriana Tanner, MD



# Thank You to NAEAC Staff!

- Ellen Riker, Executive Director
- Johanna Gray, Deputy Director
- Barbara Small, Programs Manager



# Questions?

